

## Our History

Stamford Insurance Agency has been in business since 1964 in the small farming and ranching community of Stamford, Texas. We have a friendly staff that can help you design an insurance plan that fits your personal needs, at a price you can hang your hat on. Our mission statement is "To protect the future of our neighbors by providing them security today!" Why not let people that are personally involved in farming and ranching handle your insurance needs?

**Stamford Insurance Agency**  
**PO Box 352**  
**Stamford, Texas 79553**

Phone: 325-773-2754  
Toll Free: 800-687-0767  
Fax: 325-773-2223  
Email: [sia@stamfordinsurance.com](mailto:sia@stamfordinsurance.com)  
Web: [www.stamfordinsurance.com](http://www.stamfordinsurance.com)

## Stamford Insurance Agency

**We offer many  
types of Farm &  
Ranch insurance.**



Josh Murphree & Randy Murphree—Agents

You deserve the comfort of knowing you are protected. Do not trust the job of protecting your future to just any insurance agent.

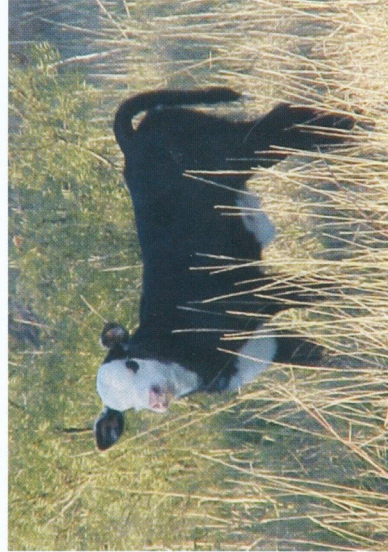
**Stamford Insurance Agency**  
**PO Box 352**  
**Stamford, Texas 79553**

Phone: 325-773-2754  
Toll Free: 800-687-0767  
Fax: 325-773-2223  
Email: [sia@stamfordinsurance.com](mailto:sia@stamfordinsurance.com)  
Web: [www.stamfordinsurance.com](http://www.stamfordinsurance.com)

## Is your coverage complete?

### **Farm and Ranch Owners**

The insurance industry has been going through a lot of changes over the past few years. One change has caused many insurance companies to offer only a Form A, a limited form of coverage, for your home. Through our relationship with various insurance providers, we are fortunate to be able to offer you a Form B, the best coverage available in Texas. If you are neglecting familiarizing yourself with a few of the different options available, then you could be giving up valuable coverage. It is important that you have a relationship with an agent that will understand your needs.



### **Farm Liability**

Farm liability is one of the fastest growing insurance concerns that anyone involved in agriculture faces today. The truth is that just a few seconds of bad luck can wipe out an entire lifetime of hard work and savings. If you own or lease any land it is in your best interest to investigate the risks you are facing. There are several different ways to protect your future from a law suit, but you must have an agent that is willing to sit down and evaluate your individual needs. Give us that opportunity.



### **Equipment and Barns**

We can offer you great rates on your equipment and barn coverage. If you are just accepting the insurance offered through your dealer, then you probably are throwing money away. With the in-

creasing cost of equipment and construction, you can not afford to neglect protecting some of your most expensive assets. Come by and let us show you what we have to offer.

### **Excess Liability**

If you are concerned with a law suit taking the things that are dearest to you, then you will want to let us show you how an umbrella policy can give you better peace of mind. An umbrella policy can give you up to \$5,000,000 of extra liability protection beyond your normal policy limit. Let us show you how a little planning can protect your economic future.

